

# **Grant Submission, Resubmission, and the Review Committee**

BORG Affinity Group  
June 24, 2008

# Success Rates

<b>2002</b>					
<b>Type</b>	<b>Activity</b>	<b>Success Rate Base</b>	<b>Number awarded</b>	<b>Total cost awarded</b>	<b>Success rate</b>
New	R01	16,905	4,142	\$1,404,106,523	24.5%
New	R03	2,176	717	\$53,864,250	33%
New	R15	461	162	\$21,878,906	35.1%
New	R21	3,966	1,085	\$182,749,153	27.4%

<b>2007</b>					
<b>Type</b>	<b>Activity</b>	<b>Success Rate Base</b>	<b>Number awarded</b>	<b>Total cost awarded</b>	<b>Success rate</b>
New	R01	20,648	3,958	\$1,514,515,667	19.2%
New	R03	3,023	718	\$53,972,165	23.8%
New	R15	784	178	\$37,2662,845	22.7%
New	R21	11,395	1,853	\$377,813,686	16.3%

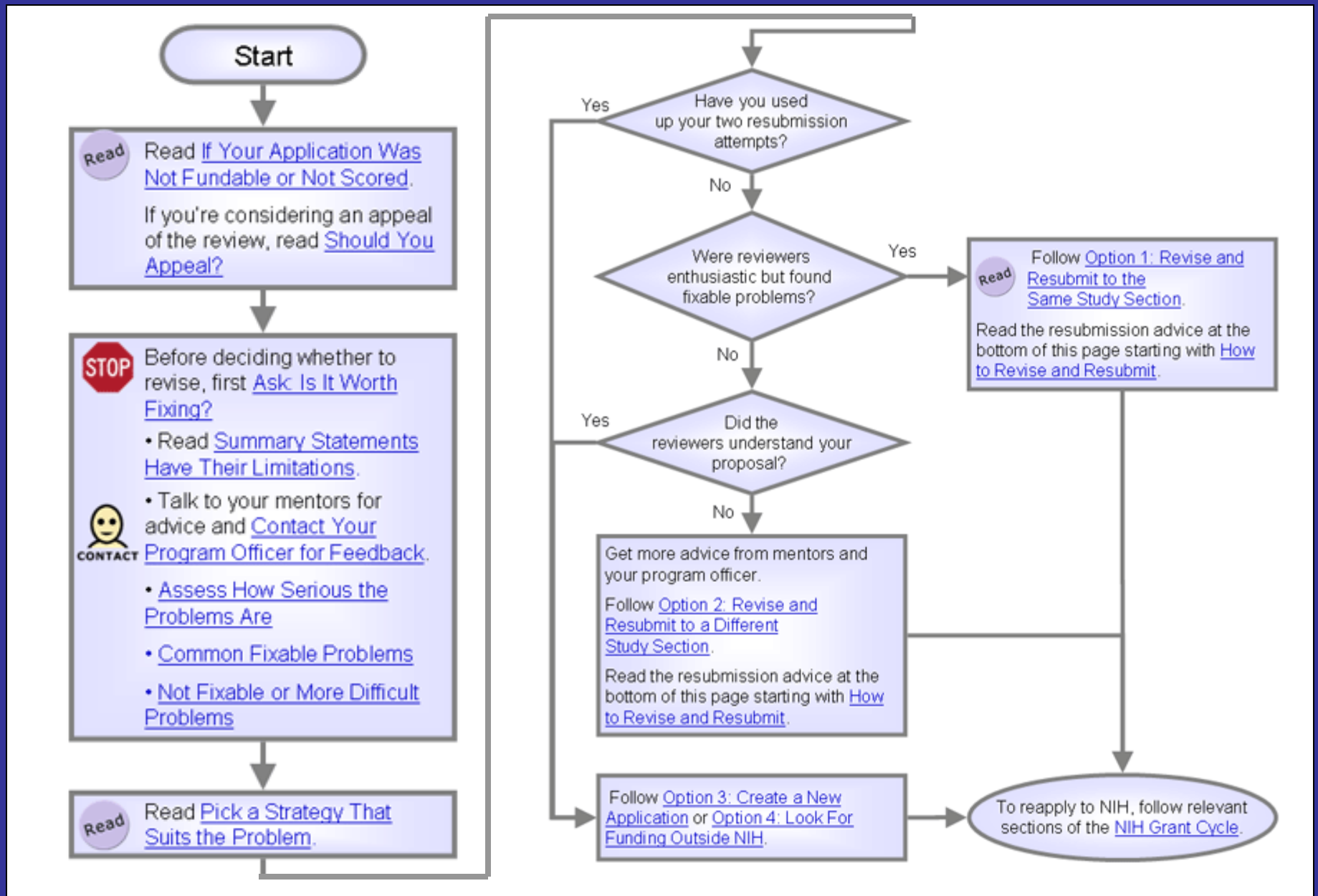
# Success Rates

<b>2002</b>					
<b>Type</b>	<b>Activity</b>	<b>Success Rate Base</b>	<b>Number awarded</b>	<b>Total cost awarded</b>	<b>Success rate</b>
Continuation	R01	5,055	2,480	\$867,278,122	49.1%
Continuation	R03	12	7	\$265,042	58.3%
Continuation	R15	41	25	\$3,400,864	61.0%
Continuation	R21	31	30	\$9,181,018	96.8%

<b>2007</b>					
<b>Type</b>	<b>Activity</b>	<b>Success Rate Base</b>	<b>Number awarded</b>	<b>Total cost awarded</b>	<b>Success rate</b>
Continuation	R01	6,433	2,325	\$891,876,003	36.1%
Continuation	R03	–	–	–	–
Continuation	R15	78	38	\$7,965,859	48.7%
Continuation	R21	–	–	–	–

# NIH Grant Cycle: Application to Renewal





# Grant Cycles

GRANT	TYPE	DUE DATES		
		Cycle I	Cycle II	Cycle III
R01	New	Feb 5	June 5	Oct 5
R03	New	Feb 16	June 16	Oct 16
R21	New	Feb 16	June 16	Oct 16
R01	Resubmit, Renewal, Revision	Mar 5	July 5	Nov 5
R03	Resubmit, Renewal, Revision	Mar 16	July 16	Nov 16
R21	Resubmit, Renewal, Revision	Mar 16	July 16	Nov 16

<http://grants.nih.gov/grants/funding/submissionschedule.htm>

# Review and Award Cycles

	<b>Cycle I</b>	<b>Cycle II</b>	<b>Cycle III</b>
<b>Scientific Merit Review</b>	June - July	October - November	February - March
<b>Advisory Council Review</b>	September - October	January - February	May - June
<b>Earliest Project Start Date</b>	December	April	July

NOTE: Awarding components may not always be able to honor the requested start date of an application; therefore, applicants should make no commitments or obligations until confirmation of the start date by the awarding component.

# Purpose of Mock Review Session





<http://www.csr.nih.gov/video/video.asp>

# **Scientific Review Group (SRG)**

# Scientific Review Group

- Actual study sections have 20 to 30 reviewers
- Members in attendance
  - Review Committee Chair
  - Primary and secondary reviewers
  - Program staff from funding institutes
  - Scientific Review Officer (SRO)

# Scientific Review Group

## Reviewers

- Identified as an expert in their field
- PI on research project comparable to those being reviewed
- Articulate and succinct, dedicated to fairness and objectivity
- Work well in a group & remain engaged in the review process

## Chair of Review Committee

- Work with SRO in identifying reviewers
  - Ensure full range of required expertise is represented
  - Ensure diversity in gender ethnicity and geographic distribution
- Review assigned grants
- Ensure fairness and quality/consistency of review
- Maintain pace of the review session

# Scientific Review Group

## Scientific Review Officer

- Pre-meeting responsibilities
  - Works with chair to prepare for meetings
  - Verify appropriateness of applications for a study section
  - Identify and recruit reviewers
  - Assigns applications to specific reviewers
- During meeting
  - Official government representative-ensures policy is followed
  - Presents conflict of interest and confidentiality rules
  - Meeting recorder
- Post meeting
  - Documents scores and budgets
  - Produces summary statements
  - Works with program administrator to respond to appeals

**Behavioral Medicine,  
Interventions and  
Outcomes Study Section**